



Packtrapper

Sample 666-081023-010

Zoy Sauce

Batch/Lot # MM00CM0824

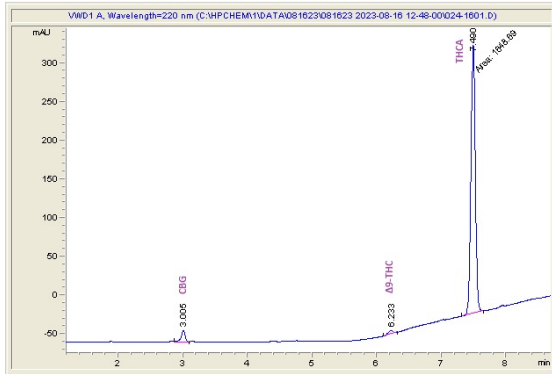
Sample Submitted: 10-17-2024; Report Date: 10-21-2024

Zoy Sauce

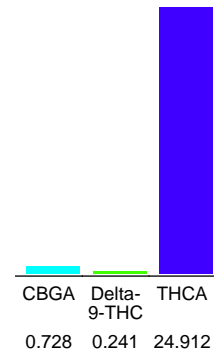
Batch/Lot # MM00CM0624

Plant Material: Flower

Chromatogram



Cannabinoid Profile



Cannabinoid Profile by HPLC

**0.24%**  
Delta-9-THC

**0.00%**  
CBD

**22.88%**  
Total Cannabinoids

| Cannabinoid                                       | % wt          | mg/g           |
|---|---------------|----------------|
| CBGA  | 0.728         | 7.28           |
| Delta-9-THC                                       | 0.241         | 2.41           |
| THCA  | 24.91         | 249.12         |
| <b>Total Cannabinoids</b>                         | <b>22.815</b> | <b>228.15</b>  |
| <b>Calculated Total THC</b>                       | <b>22.087</b> | <b>220.871</b> |
| <b>Calculated CBD Yield</b>                       | <b>0.00</b>   | <b>0.00</b>    |
| Calculated Total THC = Delta-9-THC + 0.877 * THCA |               |                |
| Calculated Maximum CBD Yield = CBD + 0.877 * CBDA |               |                |

**Marin Analytics, LLC**  
250 Bel Marin Keys Blvd, Suite D4  
Novato, CA 94949

833-321-TEST / info@marinanalytics.com

**Sara Biancalana**  
Chief Scientist

This sample has been tested by Marin Analytics, LLC using valid testing methodologies and a quality system. Values reported relate only to the sample tested. Marin Analytics, LLC makes no claims as to the efficacy, safety, or other risks associated with any detected or non-detected levels of any compounds reported herein. This Certificate shall not be reproduced except in full without the written approval of Marin Analytics, LLC. Copyright 2023 Marin Analytics, LLC All Rights Reserved.